

CODIGO INFORME:  
**PR-RES-02-B12-223-C-01**  
 DESCRIPCIÓN INFORME  
**BLOQUE 12 - Cubierta**

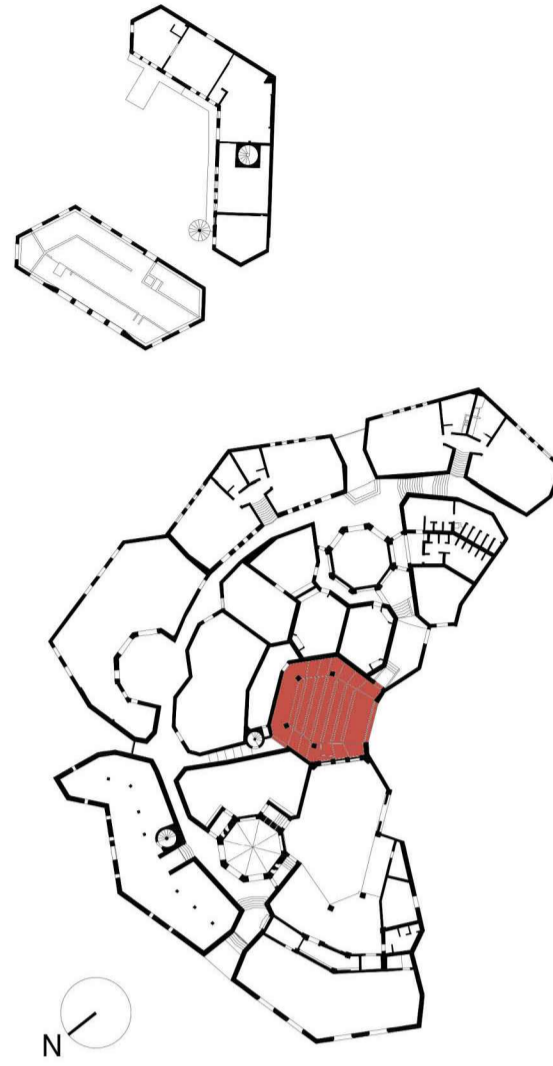
**Levantamiento digital y restitución 2D/3D**  
 Responsable científico: Prof. Alessandro Merlo  
 Colaboradores  
 Arq. Francesco Frullini  
 Ph.D. Arq. Gaia Lavoratti  
 Arq. Giulia Lazzari  
 Arq. Elisa Luzzi  
 Arq. Michela Notarnicola

**Diagnostico de las alteraciones y degradaciones**  
 Responsable científico: Prof. Susanna Caccia  
 Colaboradores  
 Ph.D. Arq. Stefania Aimar  
 Ph.D. Arq. Leonardo Germani  
 Arq. Francesco Pisani  
 Ph.D. Arq. Salvatore Zocco

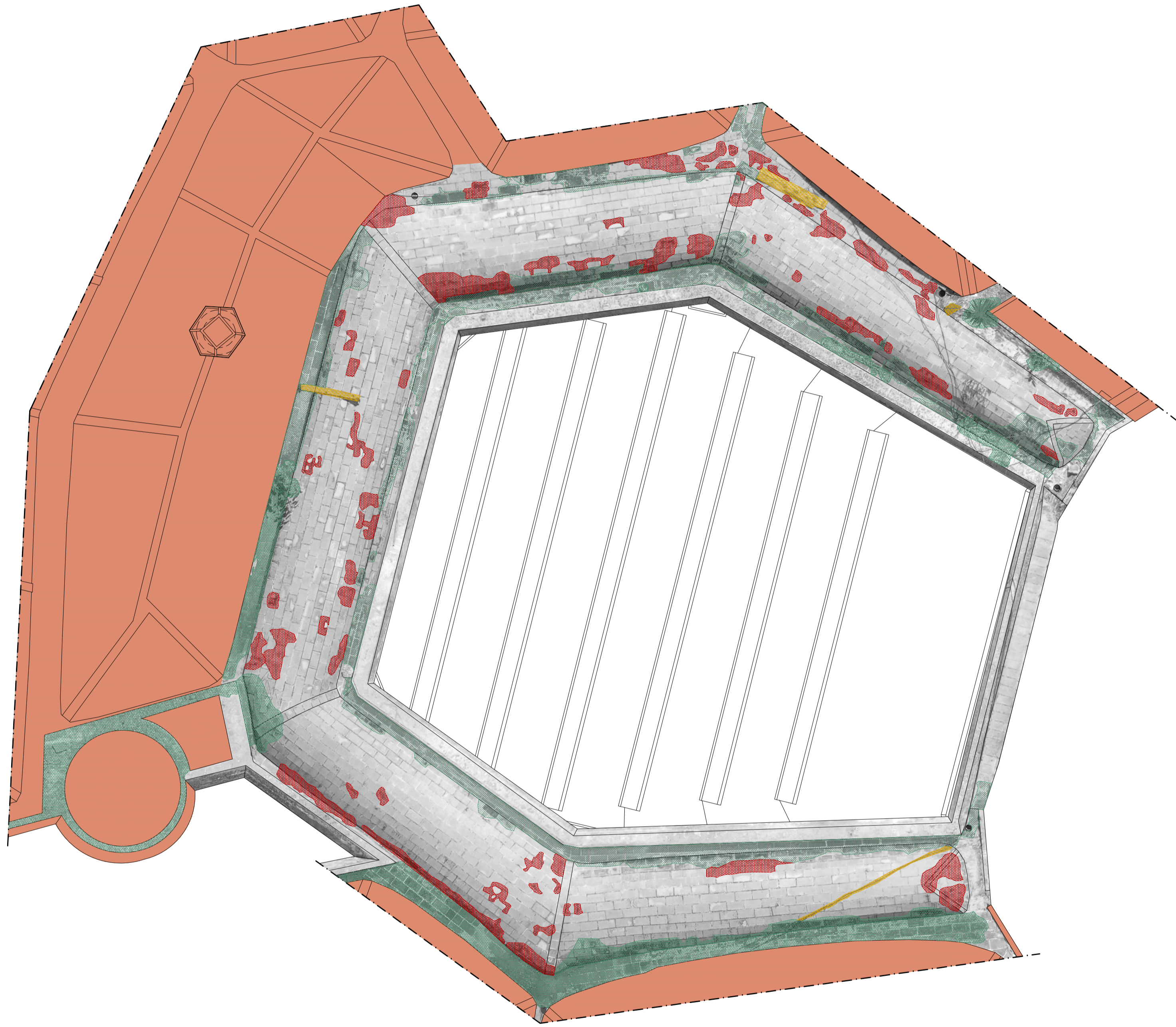
**Análisis de la inestabilidad**  
 Responsable científico: Prof. Michele Paradiso  
 Colaboradores  
 Lic. Marco Altamura  
 Prof. Stefano Galassi  
 Arq. Sara Garuglieri

**Técnicas e instrumentos para la gestión de obras de restauración y consolidación**  
 Responsable científico: Prof. Saverio Mecca  
 Colaboradores  
 Prof. Letizia Dipasquale  
 Ing. Vito Getuli

**Modelo de información de la construcción (BIM)**  
 Responsable científico: Prof. Carlo Biagini  
 Colaborador  
 Ph.D. Ing. Vincenzo Donato



escala : 1:50  
 Tamaño: A1  
 0 10 20 30 40 50 m



## Lista de degradaciones y alteraciones | fichas técnicas | intervenciones

Operaciones preliminares		Limpieza		Integración / restablecimiento	
Inspección del soporte	Protección del soporte	Rasado de agregados y elementos incompatibles	Rasado manual con equipo adecuado	Perforación del soporte con medios mecánicos	Limpieza con sello en fibra vegetal (zohinj) o nylon
Integración / restablecimiento de la textura de la pared	Reparación de grietas con morteros compatibles	Limpieza con pinceles y esponjas	Limpieza con chorro de agua	Aplicación de agua pulverizada a baja presión	Preconsolidación / Consolidación
Reparación de irregularidades de la estructura (estructuras, techos, etc.) con materiales compatibles, nacionales o autóctonos	Integración / restablecimiento de elementos estructurales	Empiezo de disolventes químicos	Empiezo de esponjas suaves	Aplicación de biocidas	Protección
		Corte de vegetación	Aplicación de biocida mediante nebulización	Eliminación del sistema raíz	Barrera contra la humedad por capilaridad ascendente
					Aplicación de Hidrorepelente no fluorado
					Aplicación de alucidas - ligueras

RMZ 02	RMZ 02	CSD 01	CSD 02	INT 02	PLT 01	PLT 02	PLT 03	PLT 02	PLT 02	DMP 01	DSZ 01	DSZ 02
[Icon]	[Icon]	[Icon]	[Icon]	[Icon]	[Icon]	[Icon]	[Icon]	[Icon]	[Icon]	[Icon]	[Icon]	[Icon]
CSD 01	CSD 01	INT 04	INT 04	INT 02	PLT 03	PLT 02	PLT 02	PLT 02	PLT 02	INT 06	DSZ 04	INT 03
[Icon]	[Icon]	[Icon]	[Icon]	[Icon]	[Icon]	[Icon]	[Icon]	[Icon]	[Icon]	[Icon]	[Icon]	[Icon]
INT 02	INT 04	INT 02	INT 04	INT 02	PLT 03	PLT 02	PLT 02	PLT 02	INT 06	DSZ 04	INT 03	INT 05
[Icon]	[Icon]	[Icon]	[Icon]	[Icon]	[Icon]	[Icon]	[Icon]	[Icon]	[Icon]	[Icon]	[Icon]	[Icon]
INT 02	INT 04	INT 02	INT 04	INT 02	PLT 03	PLT 02	PLT 02	PLT 02	INT 06	DSZ 04	INT 03	INT 05
[Icon]	[Icon]	[Icon]	[Icon]	[Icon]	[Icon]	[Icon]	[Icon]	[Icon]	[Icon]	[Icon]	[Icon]	[Icon]
INT 02	INT 04	INT 02	INT 04	INT 02	PLT 03	PLT 02	PLT 02	PLT 02	INT 06	DSZ 04	INT 03	INT 05
[Icon]	[Icon]	[Icon]	[Icon]	[Icon]	[Icon]	[Icon]	[Icon]	[Icon]	[Icon]	[Icon]	[Icon]	[Icon]
INT 02	INT 04	INT 02	INT 04	INT 02	PLT 03	PLT 02	PLT 02	PLT 02	INT 06	DSZ 04	INT 03	INT 05
[Icon]	[Icon]	[Icon]	[Icon]	[Icon]	[Icon]	[Icon]	[Icon]	[Icon]	[Icon]	[Icon]	[Icon]	[Icon]
INT 02	INT 04	INT 02	INT 04	INT 02	PLT 03	PLT 02	PLT 02	PLT 02	INT 06	DSZ 04	INT 03	INT 05
[Icon]	[Icon]	[Icon]	[Icon]	[Icon]	[Icon]	[Icon]	[Icon]	[Icon]	[Icon]	[Icon]	[Icon]	[Icon]
INT 02	INT 04	INT 02	INT 04	INT 02	PLT 03	PLT 02	PLT 02	PLT 02	INT 06	DSZ 04	INT 03	INT 05
[Icon]	[Icon]	[Icon]	[Icon]	[Icon]	[Icon]	[Icon]	[Icon]	[Icon]	[Icon]	[Icon]	[Icon]	[Icon]
INT 02	INT 04	INT 02	INT 04	INT 02	PLT 03	PLT 02	PLT 02	PLT 02	INT 06	DSZ 04	INT 03	INT 05
[Icon]	[Icon]	[Icon]	[Icon]	[Icon]	[Icon]	[Icon]	[Icon]	[Icon]	[Icon]	[Icon]	[Icon]	[Icon]
INT 02	INT 04	INT 02	INT 04	INT 02	PLT 03	PLT 02	PLT 02	PLT 02	INT 06	DSZ 04	INT 03	INT 05
[Icon]	[Icon]	[Icon]	[Icon]	[Icon]	[Icon]	[Icon]	[Icon]	[Icon]	[Icon]	[Icon]	[Icon]	[Icon]
INT 02	INT 04	INT 02	INT 04	INT 02	PLT 03	PLT 02	PLT 02	PLT 02	INT 06	DSZ 04	INT 03	INT 05
[Icon]	[Icon]	[Icon]	[Icon]	[Icon]	[Icon]	[Icon]	[Icon]	[Icon]	[Icon]	[Icon]	[Icon]	[Icon]
INT 02	INT 04	INT 02	INT 04	INT 02	PLT 03	PLT 02	PLT 02	PLT 02	INT 06	DSZ 04	INT 03	INT 05
[Icon]	[Icon]	[Icon]	[Icon]	[Icon]	[Icon]	[Icon]	[Icon]	[Icon]	[Icon]	[Icon]	[Icon]	[Icon]
INT 02	INT 04	INT 02	INT 04	INT 02	PLT 03	PLT 02	PLT 02	PLT 02	INT 06	DSZ 04	INT 03	INT 05
[Icon]	[Icon]	[Icon]	[Icon]	[Icon]	[Icon]	[Icon]	[Icon]	[Icon]	[Icon]	[Icon]	[Icon]	[Icon]
INT 02	INT 04	INT 02	INT 04	INT 02	PLT 03	PLT 02	PLT 02	PLT 02	INT 06	DSZ 04	INT 03	INT 05
[Icon]	[Icon]	[Icon]	[Icon]	[Icon]	[Icon]	[Icon]	[Icon]	[Icon]	[Icon]	[Icon]	[Icon]	[Icon]
INT 02	INT 04	INT 02	INT 04	INT 02	PLT 03	PLT 02	PLT 02	PLT 02	INT 06	DSZ 04	INT 03	INT 05
[Icon]	[Icon]	[Icon]	[Icon]	[Icon]	[Icon]	[Icon]	[Icon]	[Icon]	[Icon]	[Icon]	[Icon]	[Icon]
INT 02	INT 04	INT 02	INT 04	INT 02	PLT 03	PLT 02	PLT 02	PLT 02	INT 06	DSZ 04	INT 03	INT 05
[Icon]	[Icon]	[Icon]	[Icon]	[Icon]	[Icon]	[Icon]	[Icon]	[Icon]	[Icon]	[Icon]	[Icon]	[Icon]
INT 02	INT 04	INT 02	INT 04	INT 02	PLT 03	PLT 02	PLT 02	PLT 02	INT 06	DSZ 04	INT 03	INT 05
[Icon]	[Icon]	[Icon]	[Icon]	[Icon]	[Icon]	[Icon]	[Icon]	[Icon]	[Icon]	[Icon]	[Icon]	[Icon]
INT 02	INT 04	INT 02	INT 04	INT 02	PLT 03	PLT 02	PLT 02	PLT 02	INT 06	DSZ 04	INT 03	INT 05
[Icon]	[Icon]	[Icon]	[Icon]	[Icon]	[Icon]	[Icon]	[Icon]	[Icon]	[Icon]	[Icon]	[Icon]	[Icon]
INT 02	INT 04	INT 02	INT 04	INT 02	PLT 03	PLT 02	PLT 02	PLT 02	INT 06	DSZ 04	INT 03	INT 05
[Icon]	[Icon]	[Icon]	[Icon]	[Icon]	[Icon]	[Icon]	[Icon]	[Icon]	[Icon]	[Icon]	[Icon]	[Icon]
INT 02	INT 04	INT 02	INT 04	INT 02	PLT 03	PLT 02	PLT 02	PLT 02	INT 06	DSZ 04	INT 03	INT 05
[Icon]	[Icon]	[Icon]	[Icon]	[Icon]	[Icon]	[Icon]	[Icon]	[Icon]	[Icon]	[Icon]	[Icon]	[Icon]
INT 02	INT 04	INT 02	INT 04	INT 02	PLT 03	PLT 02	PLT 02	PLT 02	INT 06	DSZ 04	INT 03	INT 05
[Icon]	[Icon]	[Icon]	[Icon]	[Icon]	[Icon]	[Icon]	[Icon]	[Icon]	[Icon]	[Icon]	[Icon]	[Icon]
INT 02	INT 04	INT 02	INT 04	INT 02	PLT 03	PLT 02	PLT 02	PLT 02	INT 06	DSZ 04	INT 03	INT 05
[Icon]	[Icon]	[Icon]	[Icon]	[Icon]	[Icon]	[Icon]	[Icon]	[Icon]	[Icon]	[Icon]	[Icon]	[Icon]
INT 02	INT 04	INT 02	INT 04	INT 02	PLT 03	PLT 02	PLT 02	PLT 02	INT 06	DSZ 04	INT 03	INT 05
[Icon]	[Icon]	[Icon]	[Icon]	[Icon]	[Icon]	[Icon]	[Icon]	[Icon]	[Icon]	[Icon]	[Icon]	[Icon]
INT 02	INT 04	INT 02	INT 04	INT 02	PLT 03	PLT 02	PLT 02	PLT 02	INT 06	DSZ 04	INT 03	INT 05
[Icon]	[Icon]	[Icon]	[Icon]	[Icon]	[Icon]	[Icon]	[Icon]	[Icon]	[Icon]	[Icon]	[Icon]	[Icon]
INT 02	INT 04	INT 02	INT 04	INT 02	PLT 03	PLT 02	PLT 02	PLT 02	INT 06	DSZ 04	INT 03	INT 05
[Icon]	[Icon]	[Icon]	[Icon]	[Icon]	[Icon]	[Icon]	[Icon]	[Icon]	[Icon]	[Icon]	[Icon]	[Icon]
INT 02	INT 04	INT 02	INT 04	INT 02	PLT 03	PLT 02	PLT 02	PLT 02	INT 06	DSZ 04	INT 03	INT 05
[Icon]	[Icon]	[Icon]	[Icon]	[Icon]	[Icon]	[Icon]	[Icon]	[Icon]	[Icon]	[Icon]	[Icon]	[Icon]
INT 02	INT 04	INT 02	INT 04	INT 02	PLT 03	PLT 02	PLT 02	PLT 02	INT 06	DSZ 04	INT 03	INT 05
[Icon]	[Icon]	[Icon]	[Icon]	[Icon]	[Icon]	[Icon]	[Icon]	[Icon]	[Icon]	[Icon]	[Icon]	[Icon]
INT 02	INT 04	INT 02	INT 04	INT 02	PLT 03	PLT 02	PLT 02	PLT 02	INT 06	DSZ 04	INT 03	INT 05
[Icon]	[Icon]	[Icon]	[Icon]	[Icon]	[Icon]	[Icon]	[Icon]	[Icon]	[Icon]	[Icon]	[Icon]	[Icon]
INT 02	INT 04	INT 02	INT 04	INT 02	PLT 03	PLT 02	PLT 02	PLT 02	INT 06	DSZ 04	INT 03	INT 05
[Icon]	[Icon]	[Icon]	[Icon]	[Icon]	[Icon]	[Icon]	[Icon]	[Icon]	[Icon]	[Icon]	[Icon]	[Icon]
INT 02	INT 04	INT 02	INT 04	INT 02	PLT 03	PLT 02	PLT 02	PLT 02	INT 06	DSZ 04	INT 03	INT 05
[Icon]	[Icon]	[Icon]	[Icon]	[Icon]	[Icon]	[Icon]	[Icon]	[Icon]	[Icon]	[Icon]	[Icon]	[Icon]
INT 02	INT 04	INT 02	INT 04	INT 02	PLT 03	PLT 02	PLT 02	PLT 02	INT 06	DSZ 04	INT 03	INT 05
[Icon]	[Icon]	[Icon]	[Icon]	[Icon]	[Icon]	[Icon]	[Icon]	[Icon]	[Icon]	[Icon]	[Icon]	[Icon]
INT 02	INT 04	INT 02	INT 04	INT 02	PLT 03	PLT 02	PLT 02	PLT 02	INT 06	DSZ 04	INT 03	INT 05
[Icon]	[Icon]	[Icon]	[Icon]	[Icon]	[Icon]	[Icon]	[Icon]	[Icon]	[Icon]	[Icon]	[Icon]	[Icon]
INT 02	INT 04	INT 02	INT 04	INT 02	PLT 03	PLT 02	PLT 02	PLT 02	INT 06	DSZ 04	INT 03	INT 05
[Icon]	[Icon]	[Icon]	[Icon]	[Icon]	[Icon]	[Icon]	[Icon]	[Icon]	[Icon]	[Icon]	[Icon]	[Icon]
INT 02	INT 04	INT 02	INT 04	INT 02	PLT 03	PLT 02	PLT 02	PLT 02	INT 06	DSZ 04	INT 03	INT 05
[Icon]	[Icon]	[Icon]	[Icon]	[Icon]	[Icon]	[Icon]	[Icon]	[Icon]	[Icon]	[Icon]	[Icon]	[Icon]
INT 02	INT 04	INT 02	INT 04	INT 02	PLT 03	PLT 02	PLT 02	PLT 02	INT 06	DSZ 04	INT 03	INT 05
[Icon]	[Icon]	[Icon]	[Icon]	[Icon]	[Icon]	[Icon]	[Icon]	[Icon]	[Icon]	[Icon]	[Icon]	[Icon]
INT 02	INT 04	INT 02	INT 04	INT 02	PLT 03	PLT 02	PLT 02	PLT 02	INT 06	DSZ 04	INT 03	INT 05
[Icon]	[Icon]	[Icon]	[Icon]	[Icon]	[Icon]	[Icon]	[Icon]	[Icon]	[Icon]	[Icon]	[Icon]	[Icon]
INT 02	INT 04	INT 02	INT 04	INT 02	PLT 03	PLT 02	PLT 02	PLT 02	INT 06	DSZ 04	INT 03	INT 05
[Icon]	[Icon]	[Icon]	[Icon]	[Icon]	[Icon]	[Icon]	[Icon]	[Icon]	[Icon]	[Icon]	[Icon]	[Icon]
INT 02	INT 04	INT 02	INT 04	INT 02	PLT 03	PLT 02	PLT 02	PLT 02	INT 06	DSZ 04	INT 03	INT 05
[Icon]	[Icon]	[Icon]	[Icon]	[Icon]	[Icon]	[Icon]	[Icon]	[Icon]	[Icon]	[Icon]	[Icon]	[Icon]
INT 02	INT 04	INT 02	INT 04	INT 02	PLT 03	PLT 02	PLT 02	PLT 02	INT 06	DSZ 04	INT 03	INT 05
[Icon]	[Icon]	[Icon]	[Icon]	[Icon]	[Icon]	[Icon]	[Icon]	[Icon]	[Icon]	[Icon]	[Icon]	[Icon]
INT 02	INT 04	INT 02	INT 04	INT 02	PLT 03	PLT 02	PLT 02	PLT 02	INT 06	DSZ 04	INT 03	INT 05
[Icon]	[Icon]	[Icon]	[Icon]	[Icon]	[Icon]	[Icon]	[Icon]	[Icon]	[Icon]	[Icon]	[Icon]	[Icon]
INT 02	INT 04	INT 02	INT 04	INT 02	PLT 03	PLT 02	PLT 02	PLT 02	INT 06	DSZ 04	INT 03	INT 05
[Icon]	[Icon]	[Icon]	[Icon]	[Icon]	[Icon]	[Icon]	[Icon]	[Icon]	[Icon]	[Icon]	[Icon]	[Icon]
INT 02	INT 04	INT 02	INT 04	INT 02	PLT 03	PLT 02	PLT 02	PLT 02	INT 06	DSZ 04	INT 03	INT 05
[Icon]	[Icon]	[Icon]	[Icon]	[Icon]	[Icon]	[Icon]	[Icon]	[Icon]	[Icon]	[Icon]	[Icon]	[Icon]
INT 02	INT 04	INT 02	INT 04	INT 02	PLT 03	PLT 02	PLT 02	PLT 02	INT 06	DSZ 04	INT 03	INT 05
[Icon]	[Icon]	[Icon]	[Icon]	[Icon]	[Icon]	[Icon]	[Icon]	[Icon]	[Icon]	[Icon]	[Icon]	[Icon]
INT 02	INT 04	INT 02	INT 04	INT 02	PLT 03	PLT 02	PLT 02	PLT 02	INT 06	DSZ 04	INT 03	INT 05
[Icon]	[Icon]	[Icon]	[Icon]	[Icon]	[Icon]	[Icon]	[Icon]	[Icon]	[Icon]	[Icon]	[Icon]	[Icon]
INT 02	INT 04	INT 02	INT 04	INT 02								